



classic-modern-small



classic Ø 20 mm

Sistema reggitenda con applicazione di particolari in cristallo prodotto da maestri vetrai di Venezia.

Realizzato su una base in acciaio inox Aisi 304 è disponibile nei seguenti diametri: 12-14-16-20 mm. Tutti gli scorrimenti sono disponibili nelle finiture lucide e satinata con svariati sistemi di applicazione.

Oggetti discreti e ricchi di personalità che si integrano armoniosamente nelle soluzioni decorative più varie.

A curtain rod system in stainless steel AISI 304 available in diameters: 12-14-16-20 mm with crystal finials created by master glassmakers in Venice.

All the sliding curtain systems are available in shiny and satined finishings with various application systems.

Objects that are discreet, yet rich in personality, harmoniously complement the most varied decorative solutions.



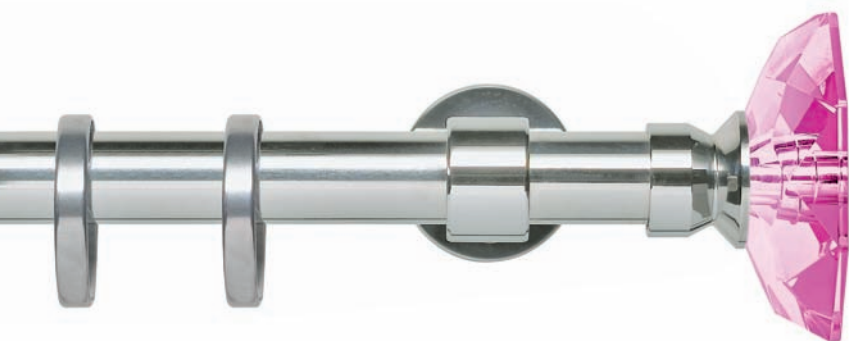
blu classic

cod. IP141

Ø 20 mm strappo
finitura satinata e lucida
Ø 20 mm traversing rod
satined and shiny finish

cod. IQ141

Ø 20 mm tiro corda
finitura satinata
Ø 20 mm rod with pull cord
mechanism satined finish



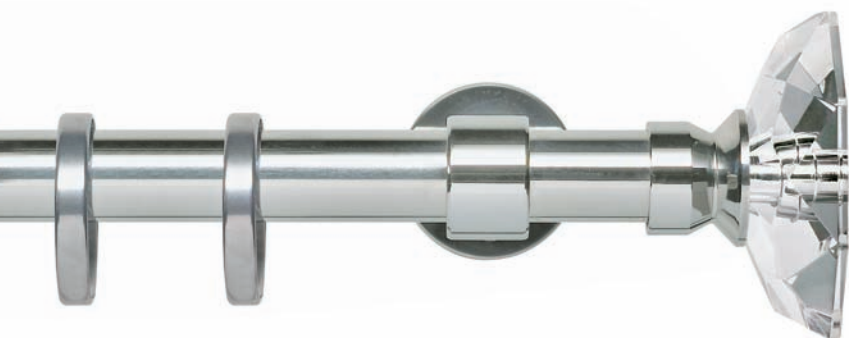
rosa classic

cod. IP141

Ø 20 mm strappo
finitura satinata e lucida
Ø 20 mm traversing rod
satined and shiny finish

cod. IQ141

Ø 20 mm tiro corda
finitura satinata
Ø 20 mm rod with pull cord
mechanism satined finish



bianco classic

cod. IP140

Ø 20 mm strappo
finitura satinata e lucida
Ø 20 mm traversing rod
satined and shiny finish

cod. IT140

Ø 20 mm tiro corda
finitura satinata
Ø 20 mm rod with pull cord
mechanism satined finish





topazio
classic

cod. IP141

Ø 20 mm strappo
finitura satinata e lucida
*Ø 20 mm traversing rod
satined and shiny finish*

cod. IQ141

Ø 20 mm tiro corda
finitura satinata
*Ø 20 mm rod with pull cord
mechanism satined finish*



frontale
classic

cod. IA149

Ø 20 mm strappo
finitura satinata e lucida
*Ø 20 mm traversing rod
satined and shiny finish*

classic curtain-stop / fermatenda · Ø 12 mm



sun
classic

cod. IS140 - cod. IS141

in acciaio inox AISI 304
allungabile 5-25 cm, Ø 12 mm
finitura satinata e lucida
*stainless steel AISI 304
extendible 5-25 cm, Ø 12 mm
satined and shiny finish*



moon
classic

cod. IM140 - cod. IM141

in acciaio inox AISI 304
piegato, Ø 12 mm
finitura satinata e lucida
*stainless steel AISI 304
bent, Ø 12 mm
satined and shiny finish*

modern Ø 20 mm

Sistema reggitenda con applicazione di particolari in cristallo prodotto da maestri vetrai di Venezia.

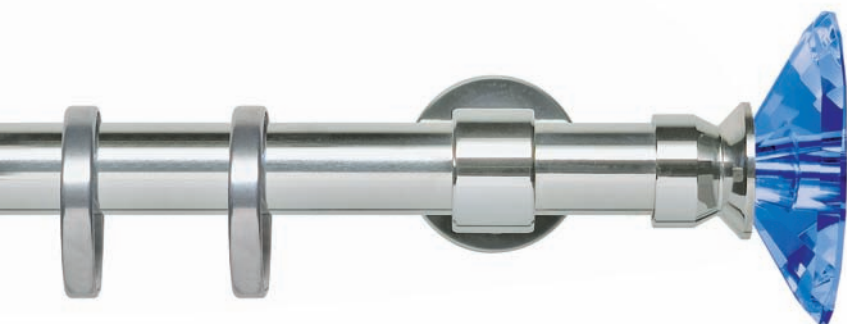
Realizzato su una base in acciaio inox Aisi 304 è disponibile nei seguenti diametri: 12-14-16-20 mm. Tutti gli scorritenda sono disponibili nelle finiture lucide e satinata con svariati sistemi di applicazione.

Oggetti discreti e ricchi di personalità che si integrano armoniosamente nelle soluzioni decorative più varie.

A curtain rod system in stainless steel AISI 304 available in diameters: 12-14-16-20 mm with crystal finials created by master glassmakers in Venice.

All the sliding curtain systems are available in shiny and satined finishings with various application systems.

Objects that are discreet, yet rich in personality, harmoniously complement the most varied decorative solutions.



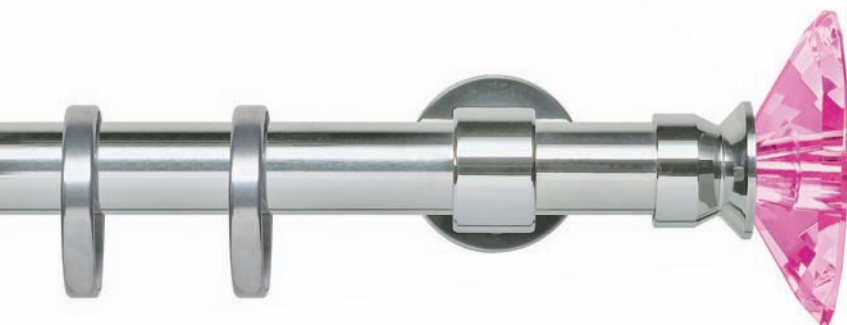
blu
modern

cod. IP143

Ø 20 mm strappo
finitura satinata e lucida
Ø 20 mm traversing rod
satined and shiny finish

cod. IQ143

Ø 20 mm tiro corda
finitura satinata
Ø 20 mm rod with pull cord
mechanism satined finish



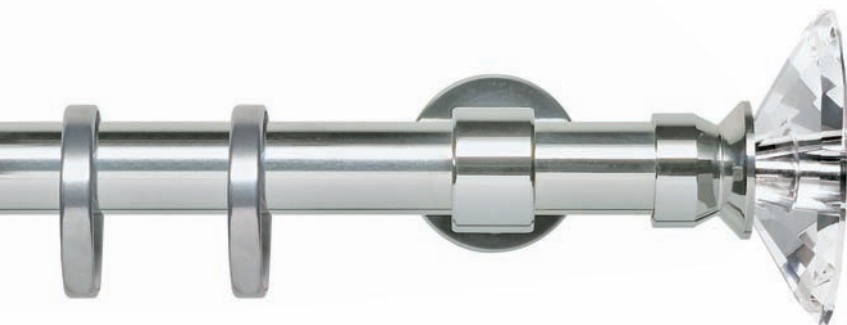
rosa
modern

cod. IP143

Ø 20 mm strappo
finitura satinata e lucida
Ø 20 mm traversing rod
satined and shiny finish

cod. IQ143

Ø 20 mm tiro corda
finitura satinata
Ø 20 mm rod with pull cord
mechanism satined finish



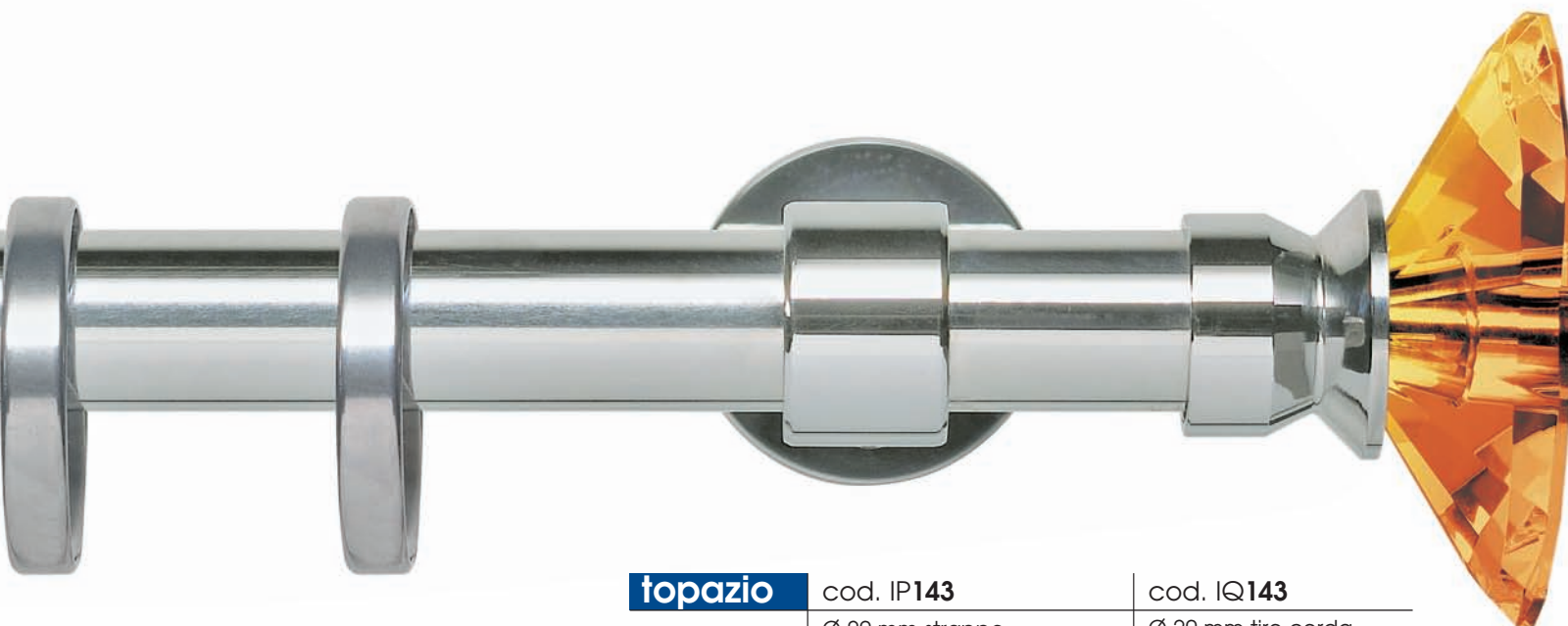
bianco
modern

cod. IP142

Ø 20 mm strappo
finitura satinata e lucida
Ø 20 mm traversing rod
satined and shiny finish

cod. IQ142

Ø 20 mm tiro corda
finitura satinata
Ø 20 mm rod with pull cord
mechanism satined finish



topazio
modern

cod. IP143

Ø 20 mm strappo
finitura satinata e lucida
Ø 20 mm traversing rod
satined and shiny finish

cod. IQ143

Ø 20 mm tiro corda
finitura satinata
Ø 20 mm rod with pull cord
mechanism satined finish



frontale
modern

cod. IA149

Ø 20 mm strappo
finitura satinata e lucida
Ø 20 mm traversing rod
satined and shiny finish

modern curtain-stop / fermatenda · Ø 12 mm



sun
modern

cod. IS142 - cod. IS143

in acciaio inox AISI 304
allungabile 5-25 cm, Ø 12 mm
finitura satinata e lucida
stainless steel AISI 304
extendible 5-25 cm, Ø 12 mm
satined and shiny finish



moon
modern

cod. IM142 - cod. IM143

in acciaio inox AISI 304
piegato, Ø 12 mm
finitura satinata e lucida
stainless steel AISI 304
bent, Ø 12 mm
satined and shiny finish

small Ø 20 mm

Sistema reggitenda con applicazione di particolari in cristallo prodotto da maestri vetrai di Venezia.

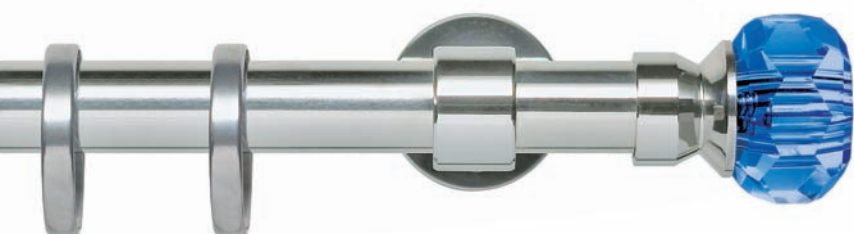
Realizzato su una base in acciaio inox Aisi 304 è disponibile nei seguenti diametri: 12-14-16-20 mm. Tutti gli scorritenda sono disponibili nelle finiture lucide e satinata con svariati sistemi di applicazione.

Oggetti discreti e ricchi di personalità che si integrano armoniosamente nelle soluzioni decorative più varie.

A curtain rod system in stainless steel AISI 304 available in diameters: 12-14-16-20 mm with crystal finials created by master glassmakers in Venice.

All the sliding curtain systems are available in shiny and satined finishings with various application systems.

Objects that are discreet, yet rich in personality, harmoniously complement the most varied decorative solutions.



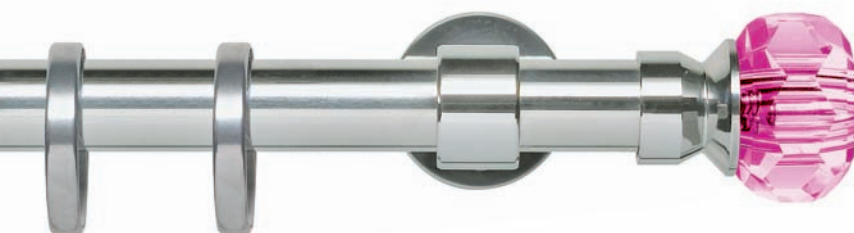
blu
small

cod. IP145

Ø 20 mm strappo
finitura satinata e lucida
Ø 20 mm traversing rod
satined and shiny finish

cod. IQ145

Ø 20 mm tiro corda
finitura satinata
Ø 20 mm rod with pull cord
mechanism satined finish



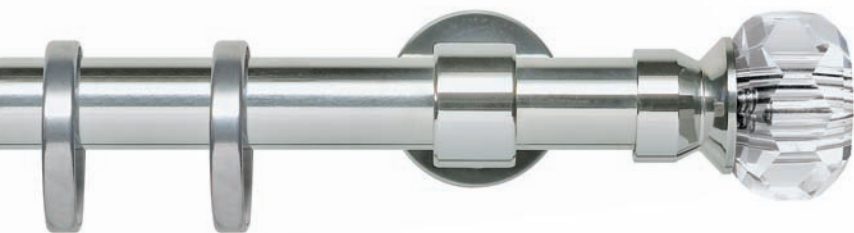
rosa
small

cod. IP145

Ø 20 mm strappo
finitura satinata e lucida
Ø 20 mm traversing rod
satined and shiny finish

cod. IQ145

Ø 20 mm tiro corda
finitura satinata
Ø 20 mm rod with pull cord
mechanism satined finish



bianco
small

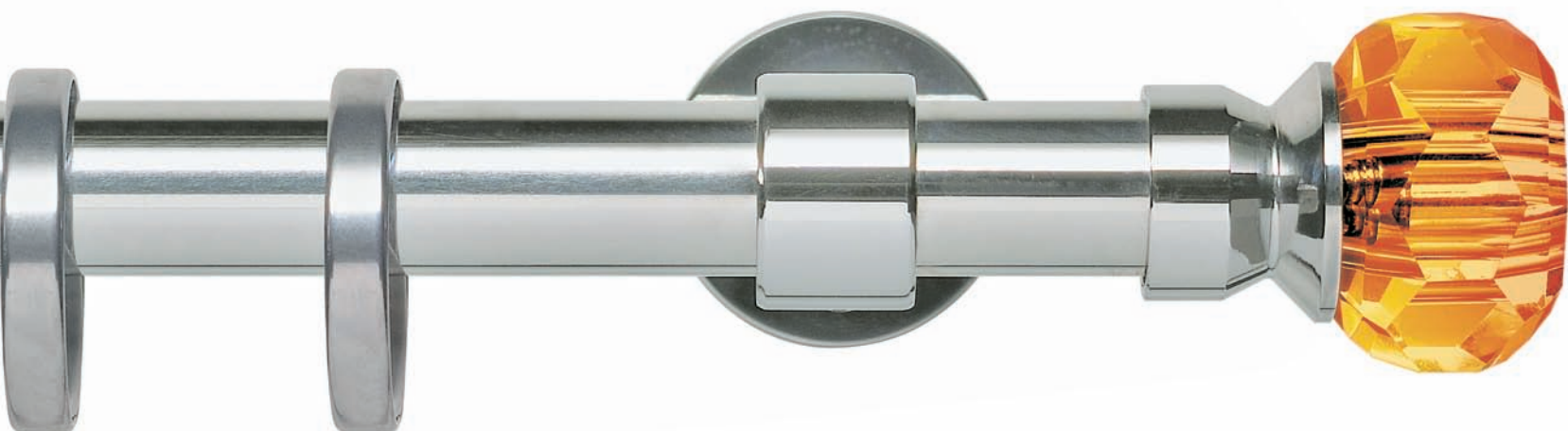
cod. IP144

Ø 20 mm strappo
finitura satinata e lucida
Ø 20 mm traversing rod
satined and shiny finish

cod. IQ144

Ø 20 mm tiro corda
finitura satinata
Ø 20 mm rod with pull cord
mechanism satined finish





topazio

small

cod. IP145

Ø 20 mm strappo
finitura satinata e lucida
*Ø 20 mm traversing rod
satined and shiny finish*

cod. IQ145

Ø 20 mm tiro corda
finitura satinata
*Ø 20 mm rod with pull cord
mechanism satined finish*

small curtain-stop / fermatenda · Ø 12 mm



sun
small

cod. IS144 - cod. IS145

in acciaio inox AISI 304
allungabile 5-25 cm, Ø 12 mm
finitura satinata e lucida
*stainless steel AISI 304
extendible 5-25 cm, Ø 12 mm
satined and shiny finish*



moon
small

cod. IM144 - cod. IM145

in acciaio inox AISI 304
piegato, Ø 12 mm
finitura satinata e lucida
*stainless steel AISI 304
bent, Ø 12 mm
satined and shiny finish*

serie *series* **acciaio**

altre Linee disponibili
other available Lines



sky



steel



eco



curtain-stop



brillanti



33097 Spilimbergo Pn Italy
Zona Industriale Nord, 36/A
Tel. +39-0427-50244
Fax +39-0427-50559
e-mail: info@frandoli.com
www.frandoli.com